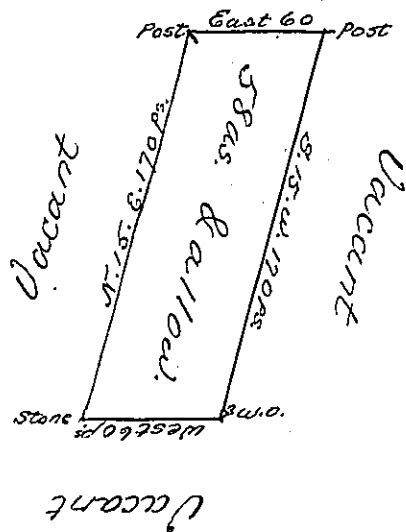


George Moltz



A Draught of a Tract of Land situate in Heidelberg Township, formerly in the County of Bucks, now in the County of Northampton containing Fifty eight acres & allowance of Six f. b. k. - Surveyed the 31st. October 1745, unto Jacob Shelhammer in pursuance of a Warrant dated the ___ day of ___ Taken from the Field Works of Edward Scull deed
 p Wm. Scull

IN TESTIMONY that the above is a copy of the original remaining on file in the Department of Internal Affairs of Pennsylvania, made conformably to an Act of Assembly approved the 16th day of February, 1833, I have hereunto set my Hand and caused the Seal of said Department to be affixed at Harrisburg, this first day of July 1902

James W. Latta
 Secretary of Internal Affairs.